



**Project on Capacity Development for Sustainable Forest
Resources Management in Solomon Islands
Ministry of Forest and Research (MOFR) &
Japan International Cooperation Agency (JICA)**

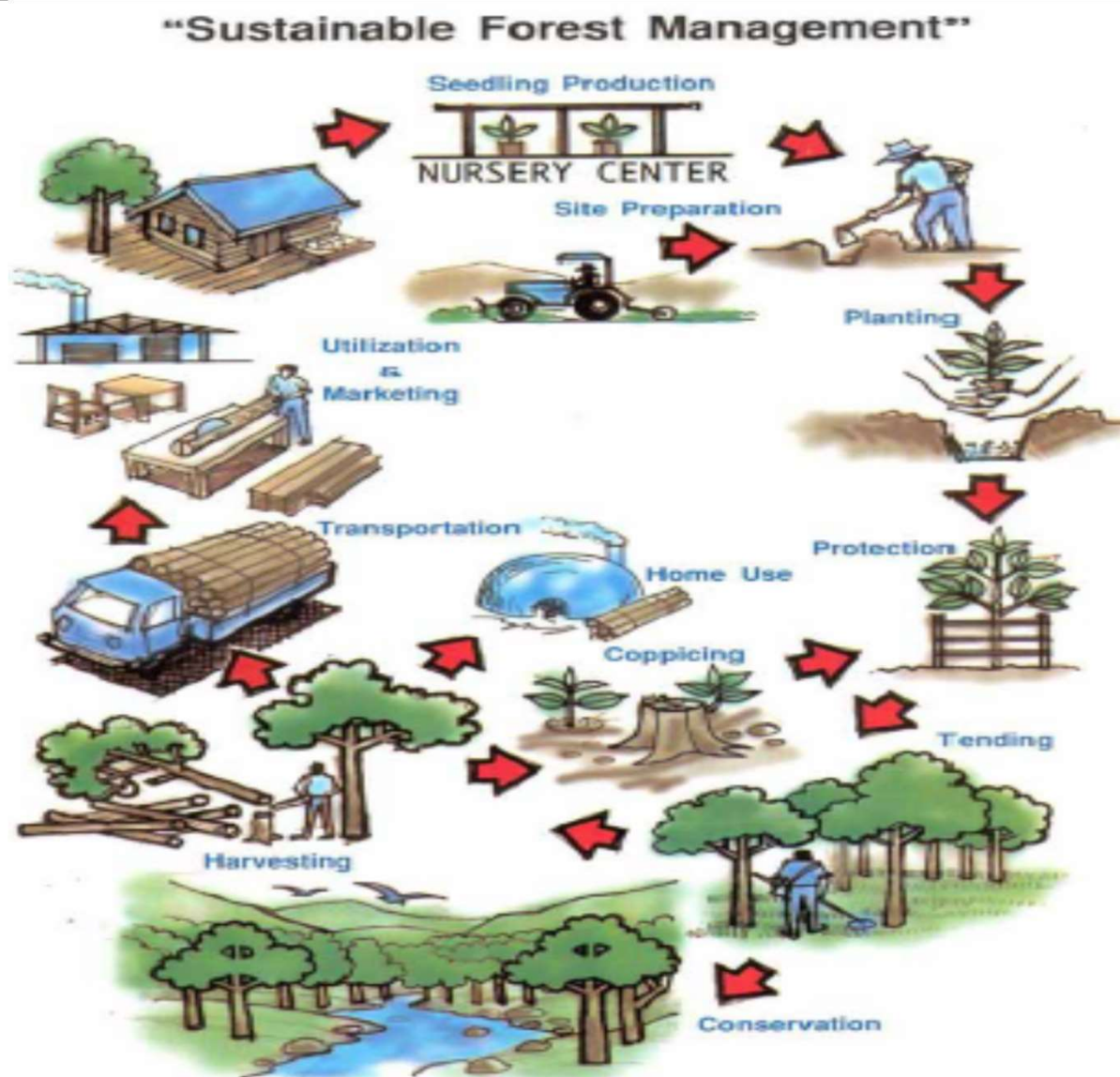


Forestry Guidance

October 2018



**Project on Capacity Development for Sustainable Forest
Resources Management in Solomon Islands
Ministry of Forest and Research (MOFR) &
Japan International Cooperation Agency (JICA)**



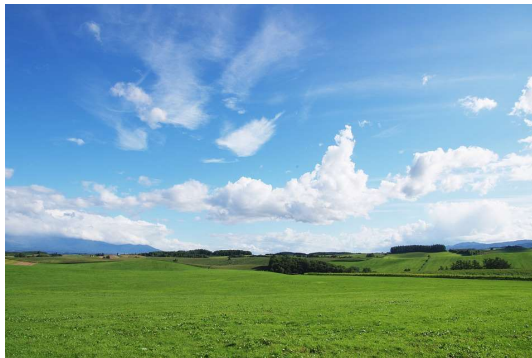


**Project on Capacity Development for Sustainable Forest
Resources Management in Solomon Islands
Ministry of Forest and Research (MOFR) &
Japan International Cooperation Agency (JICA)**

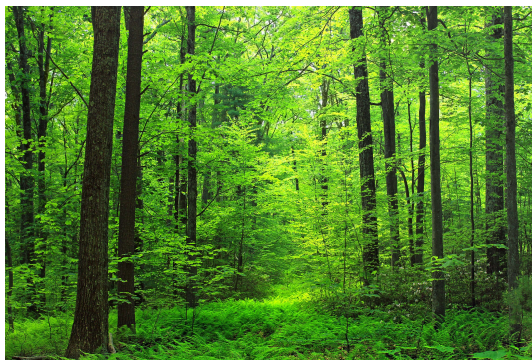


Afforestation

Even if you leave your land, the land does not make job
and money...



Forested land would be returned to artificial forest

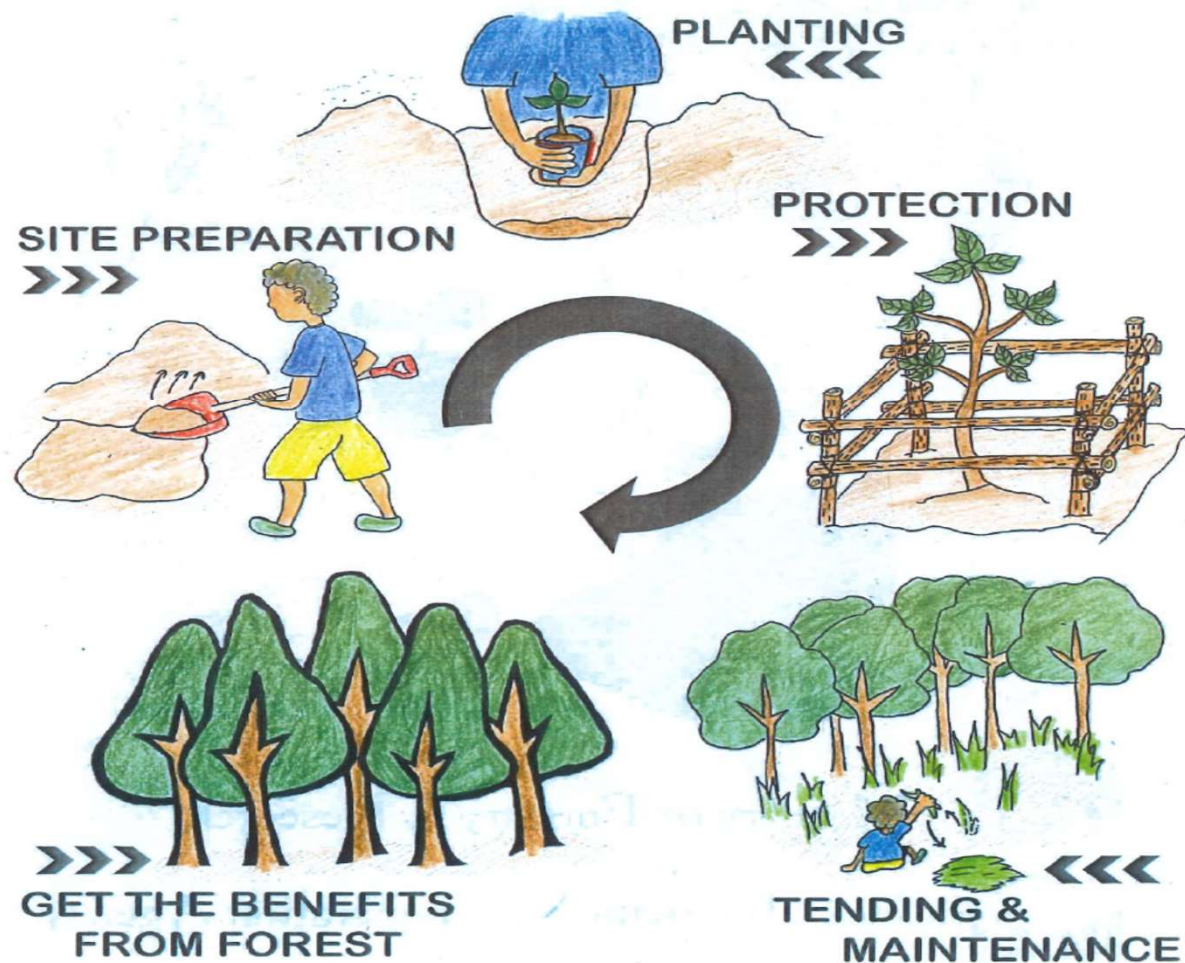




**Project on Capacity Development for Sustainable Forest
Resources Management in Solomon Islands
Ministry of Forest and Research (MOFR) &
Japan International Cooperation Agency (JICA)**

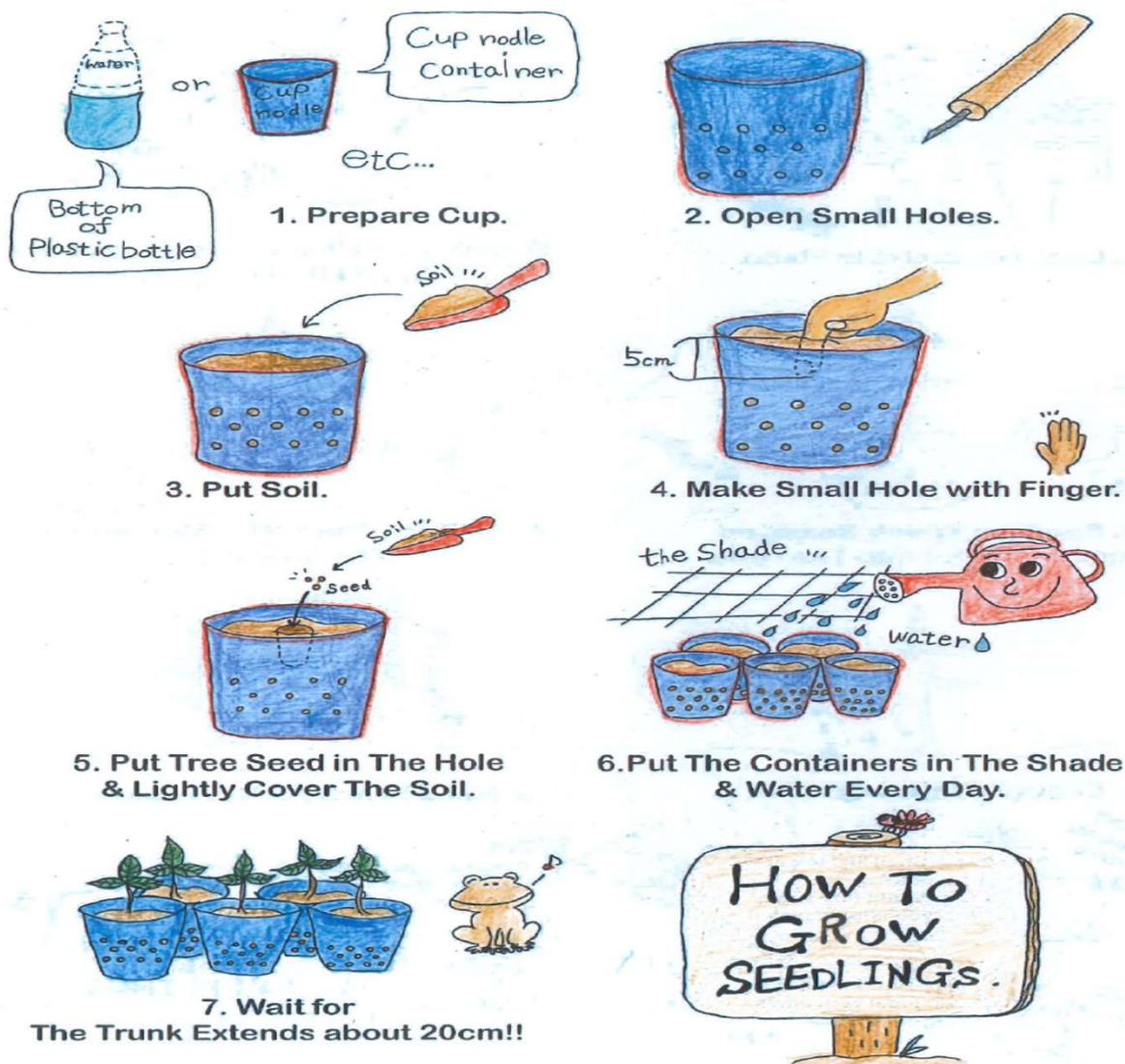


NURSERY CENTER SEEDLING PRODUCTION





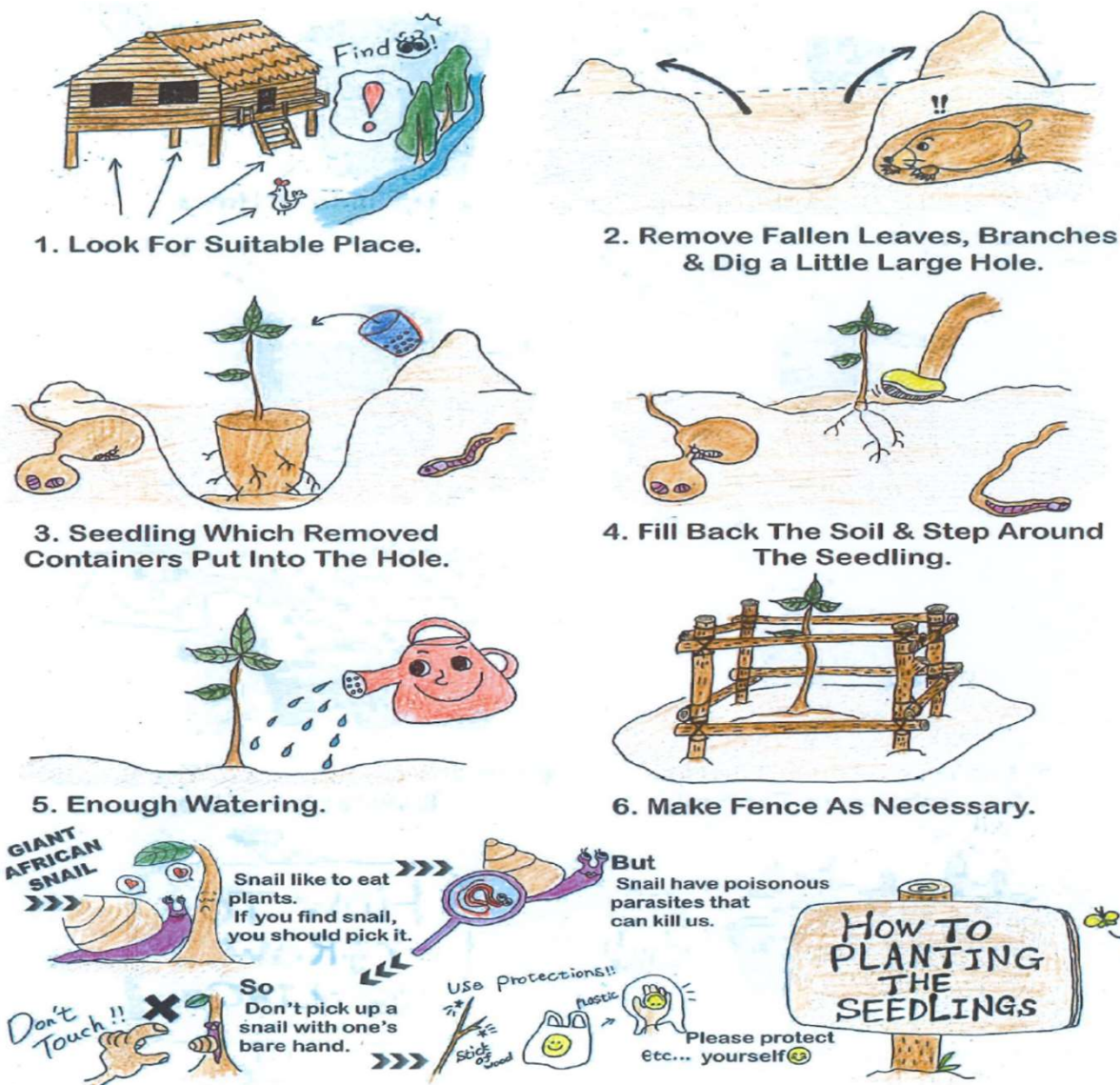
**Project on Capacity Development for Sustainable Forest
Resources Management in Solomon Islands
Ministry of Forest and Research (MOFR) &
Japan International Cooperation Agency (JICA)**





Project on Capacity Development for Sustainable Forest Resources Management in Solomon Islands

Ministry of Forest and Research (MOFR) & Japan International Cooperation Agency (JICA)

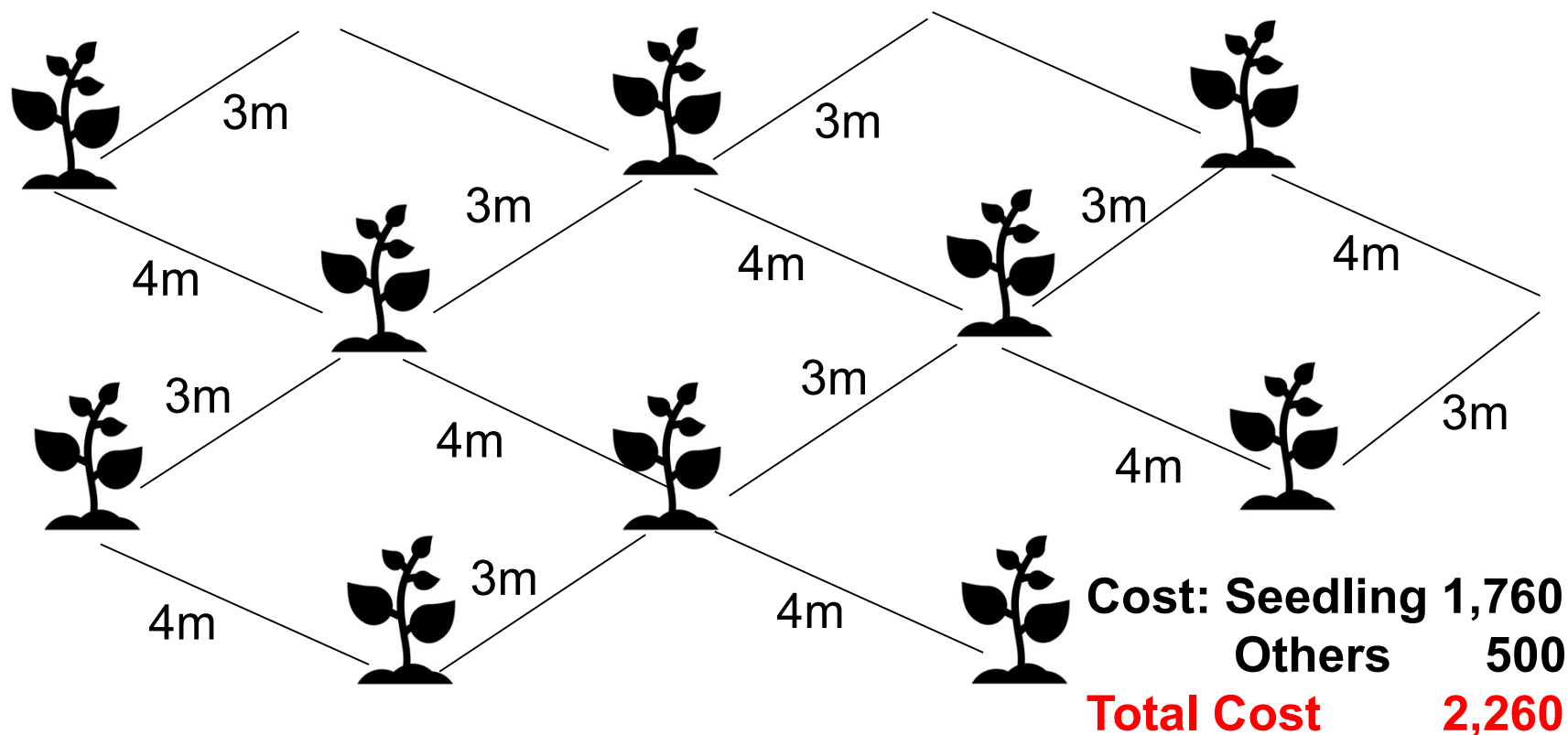




Project on Capacity Development for Sustainable Forest
Resources Management in Solomon Islands
Ministry of Forest and Research (MOFR) &
Japan International Cooperation Agency (JICA)



Exemplary Income Predicted as an Example Planting Trees
as Eucalyptus Forestation; Eucalyptus (fast growing tree)
is Planted at 3x4m Interval (Approx. 880 seedling / ha)

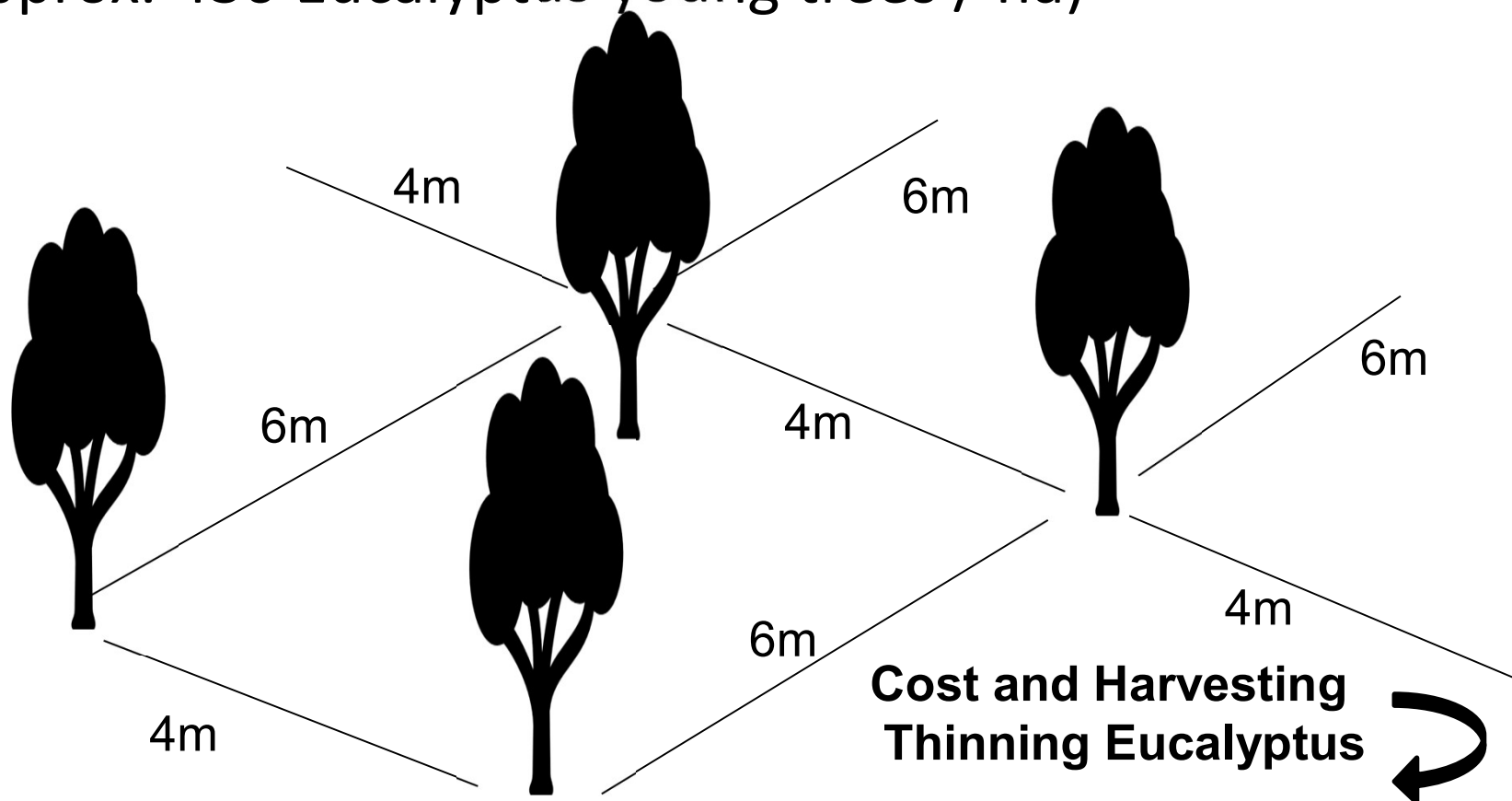




Project on Capacity Development for Sustainable Forest
Resources Management in Solomon Islands
Ministry of Forest and Research (MOFR) &
Japan International Cooperation Agency (JICA)



Thinning: 8-12 years after plant Eucalyptus
Thinning young trees and left trees at 4x6m interval.
(Approx. 430 Eucalyptus young trees / ha)

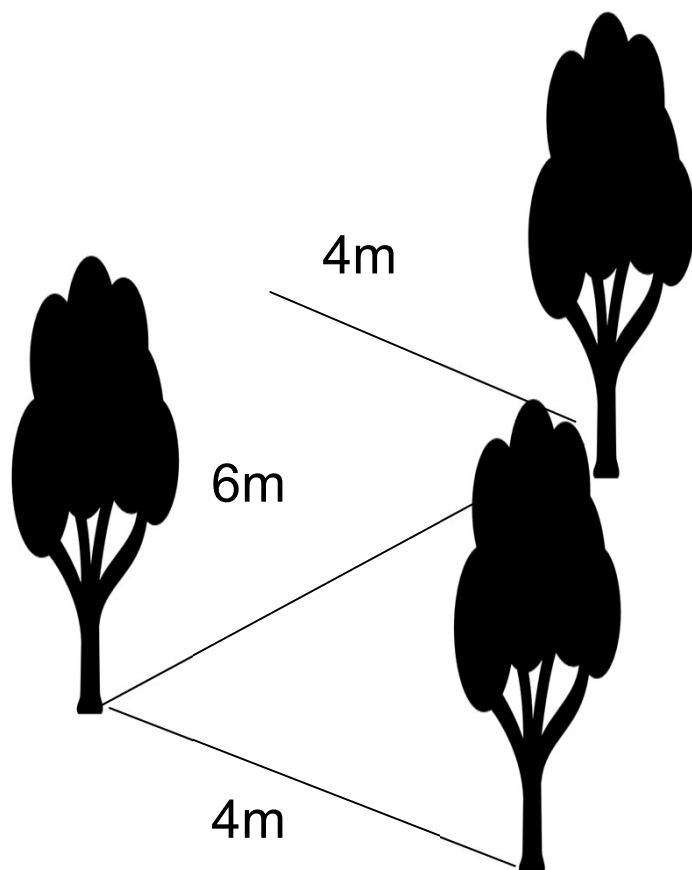




Project on Capacity Development for Sustainable Forest
Resources Management in Solomon Islands
Ministry of Forest and Research (MOFR) &
Japan International Cooperation Agency (JICA)



Thinning: 8-12 years after plant Eucalyptus



Revenue of Thinning Eucalyptus

8 years:

DBH 25cm Hight 12 (5) m = 2.015m³

2.015m³ x 50USD/m³ = USD 100.75

100.75USD x 450trees/ha = **45,337.5USD/ha**

12 years:

DBH 29cm Hight 18 (6)m = 2.867m³

2.867m³ x 50USDm³ = USD 143.35

143.35USD x 450trees/ha = **64,507.5USD/ha**

Cost :

8 years: Reforestation Program: 4,533USD

Harvesting Company: 24,482USD Tax: 10,813

12 years: Reforestation Program: 6,451USD

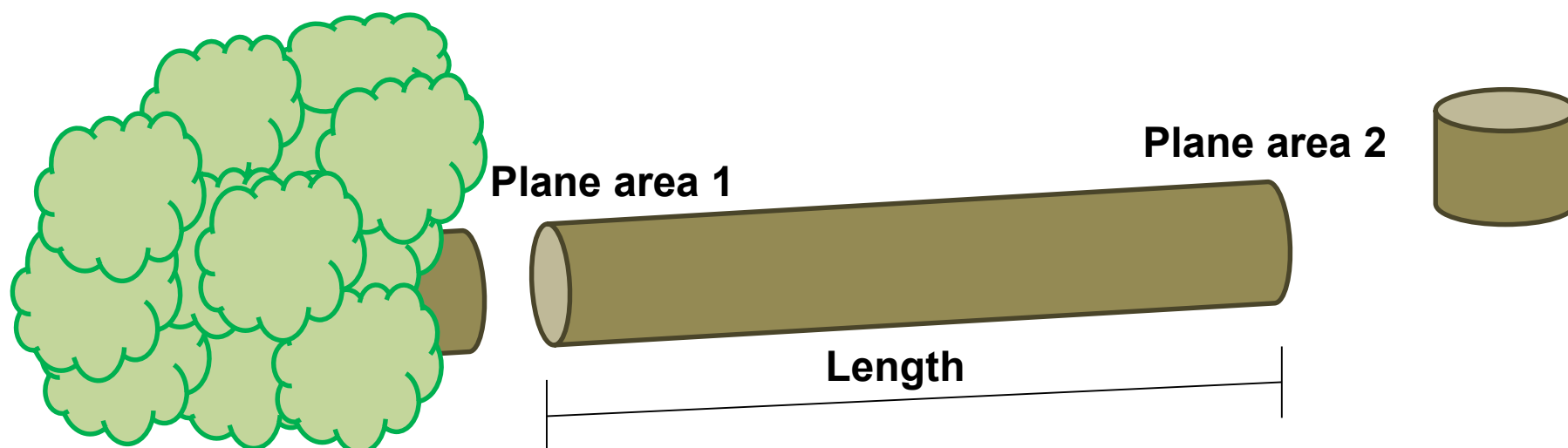
Harvesting Company: 34,833USD Tax: 15,385

Profit:

8 years: 5,509USD/ha 12 years: 7,838USD/ha



Measurement method of logs



$$\text{Plane area (m}^2\text{)} = \text{Radius} \times \text{Radius} \times 3.14$$

$$\text{Log volume (m}^3\text{)} = \text{Length} \times \frac{\text{Plane area 1} + \text{Plane area 2}}{2}$$

Please attention the unit, usually m, m², and m³



**Project on Capacity Development for Sustainable Forest
Resources Management in Solomon Islands
Ministry of Forest and Research (MOFR) &
Japan International Cooperation Agency (JICA)**



Example of Selling Price of Log (Based on ITTO Price)

Eucalyptus deglute

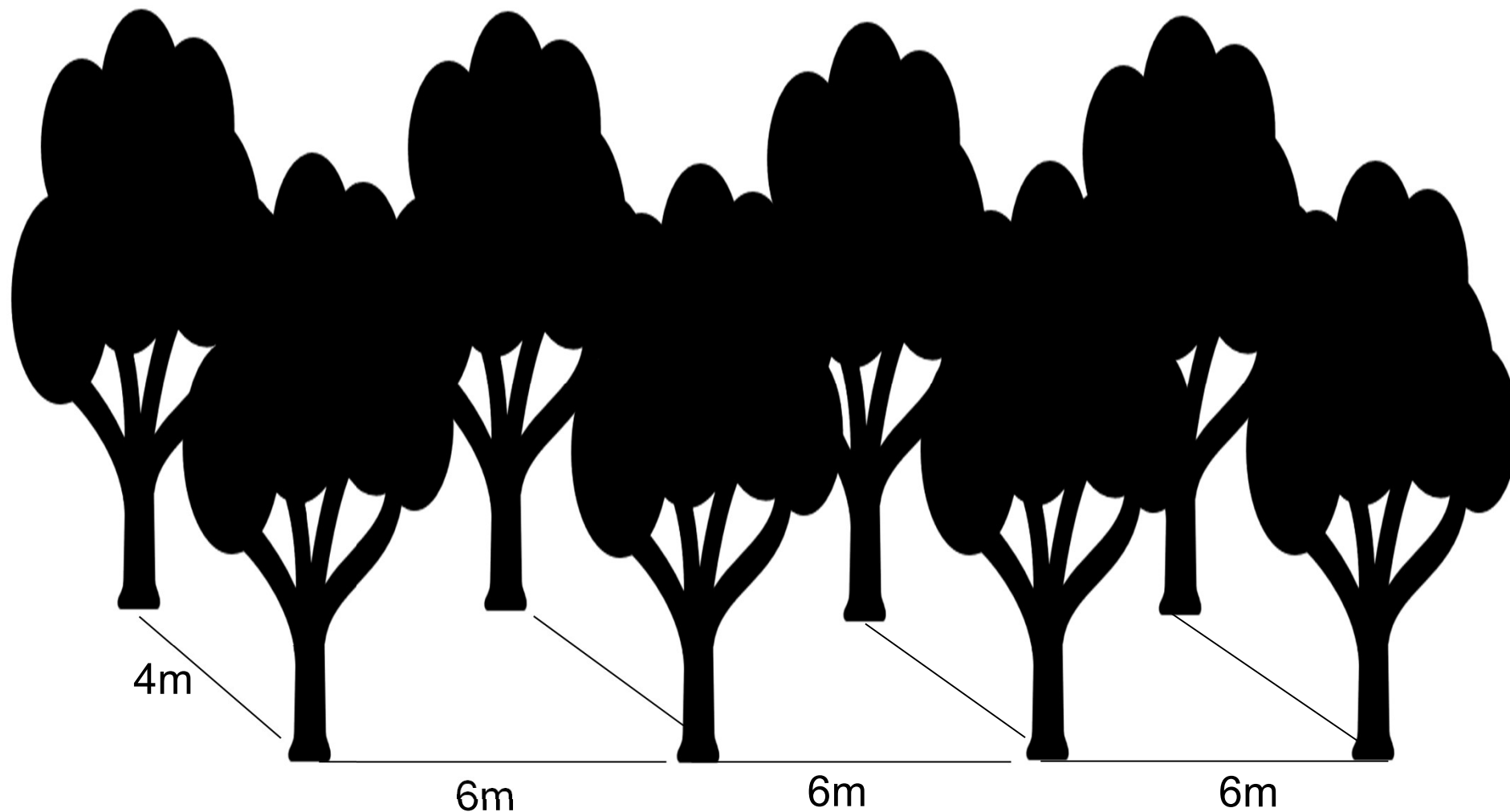
SIZE	Price Free on Board (USD/m3)
20 - 29 cm	50
30 - 39 cm	80
40 - 49cm	100
50 - 59 cm	120
Above 60 cm	140



**Project on Capacity Development for Sustainable Forest
Resources Management in Solomon Islands
Ministry of Forest and Research (MOFR) &
Japan International Cooperation Agency (JICA)**



Harvesting: 16 years after plant Eucalyptus

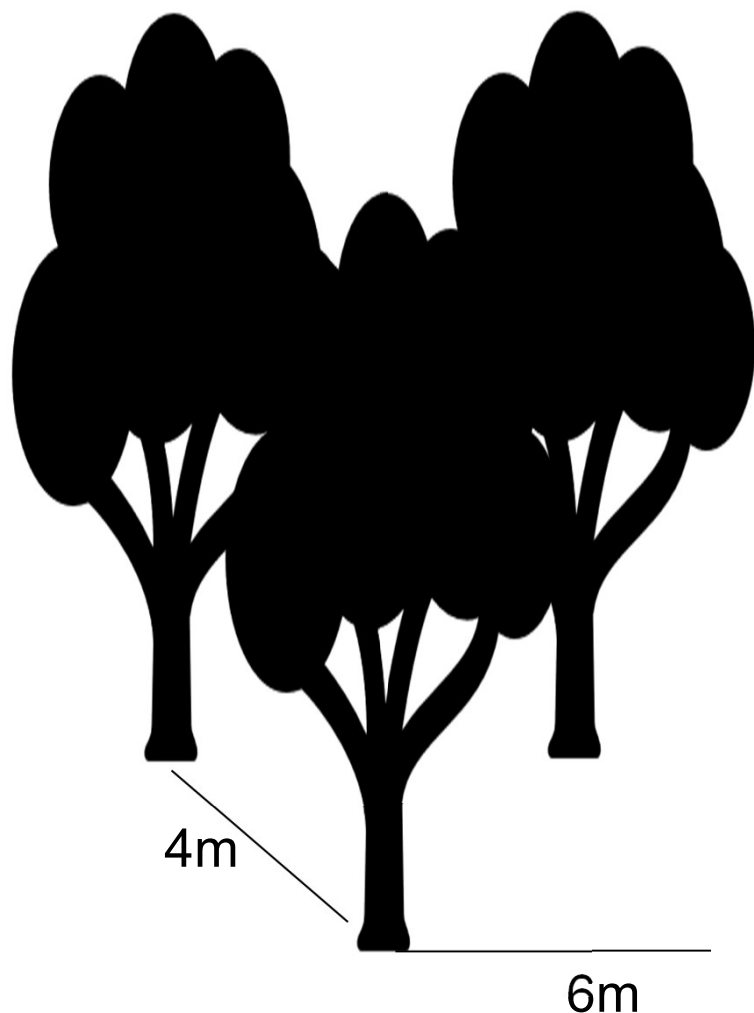




Project on Capacity Development for Sustainable Forest
Resources Management in Solomon Islands
Ministry of Forest and Research (MOFR) &
Japan International Cooperation Agency (JICA)



Harvesting: 16 years after plant Eucalyptus



Revenue of Harvesting Eucalyptus

DBH 40cm Hight 24 (9) m = 11.46m³

DBH 31cm Hight 24 (9) m = 6.88m³

DBH 24cm Hight 24 (3) m = 1.37m³

11.46m³ x 100USD/m³ = USD 1,146

6.88m³ x 90USD/m³ = USD 619

1.37m³ x 50USD/m³ = USD 68

1,283USD x 430trees/ha = **551,690USD/ha**

Cost :

Reforestation Program: 55,169USD

Harvesting Company: 297,912USD

Tax: 131,508USD

Total Cost: **484,589USD/ha**

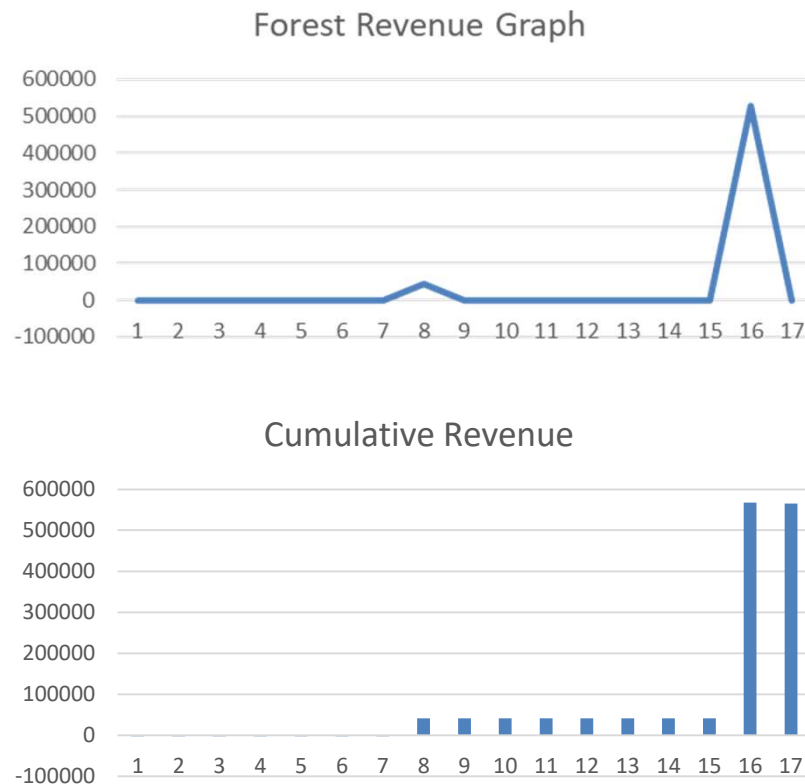
Profit: **67,101USD/ha**



**Project on Capacity Development for Sustainable Forest
Resources Management in Solomon Islands
Ministry of Forest and Research (MOFR) &
Japan International Cooperation Agency (JICA)**



Revenue for 16 years of Eucalyptus afforestation



According the Standard Logging Agreement of the Forest Resources and Timber (Prescribed Forms) Regulations (section 44) in the Forest Resources and Timber Utilization Act, logging companies should plant trees after harvesting, but most companies do not plant trees. Let them plant luxury tree species.



**Project on Capacity Development for Sustainable Forest
Resources Management in Solomon Islands
Ministry of Forest and Research (MOFR) &
Japan International Cooperation Agency (JICA)**



To make more profitable in forestry

20% of harvested logs must be sawn timbers, and up to 80% can be exported as logs.



To create wood products from the timbers and sale them.
For example, woodworking products that can be easily
made are as follows;



**Project on Capacity Development for Sustainable Forest
Resources Management in Solomon Islands
Ministry of Forest and Research (MOFR) &
Japan International Cooperation Agency (JICA)**





**Project on Capacity Development for Sustainable Forest
Resources Management in Solomon Islands
Ministry of Forest and Research (MOFR) &
Japan International Cooperation Agency (JICA)**





Project on Capacity Development for Sustainable Forest Resources Management in Solomon Islands

Ministry of Forest and Research (MOFR) & Japan International Cooperation Agency (JICA)



Point 1



Point 2





Project on Capacity Development for Sustainable Forest Resources Management in Solomon Islands

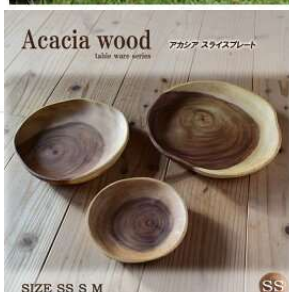
Ministry of Forest and Research (MOFR) & Japan International Cooperation Agency (JICA)



ピケット



ボーダースティック



エッグトレイ Bタイプ
Acacia tableware series



ラウンドボウル7点セット
Acacia tableware series

ポプリの森 出産祝いランキング不動の1位!

木遊舎 ベビーセット

5,400円(税込)

「木遊舎 ベビーセット」のレビューをご紹介します！
お客様からの喜びの声がたくさん届いております♪

★★★★★
お祝いに何が良いのか皆さん悩んでこれに決めました(´▽`)先様も大変喜んでおられます。

★★★★★
赤ちゃんが眠り始めても大丈夫なようにしっかり面取りされていました。白木のおもちゃが欲しかったのでとても良かったです！

★★★★★
友人の出産祝いで購入しました。友人から「手触りも良くて、こんなのが欲しいと思っていた」と大変喜んでいただきました(・v・)

日本製
MADE IN JAPAN



**Project on Capacity Development for Sustainable Forest
Resources Management in Solomon Islands
Ministry of Forest and Research (MOFR) &
Japan International Cooperation Agency (JICA)**

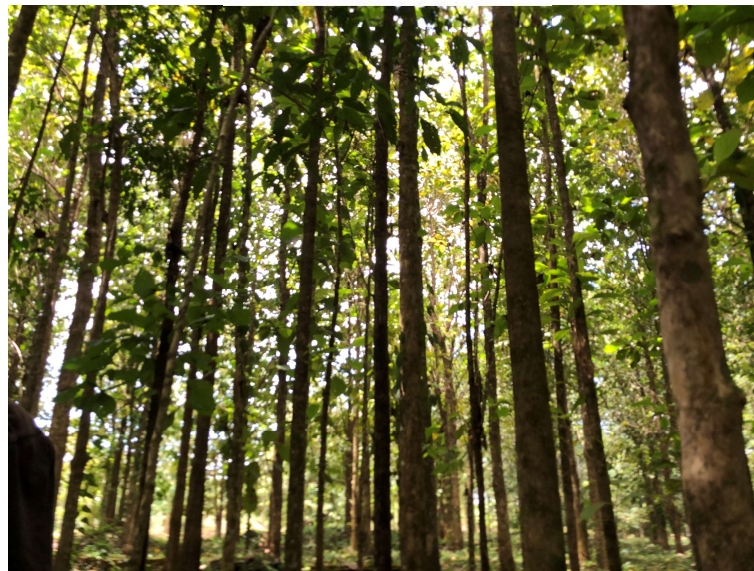




**Project on Capacity Development for Sustainable Forest
Resources Management in Solomon Islands
Ministry of Forest and Research (MOFR) &
Japan International Cooperation Agency (JICA)**



Trees are harvested after a local company and a foreign-affiliated harvesting company sign a contract and obtaining approval for logging.



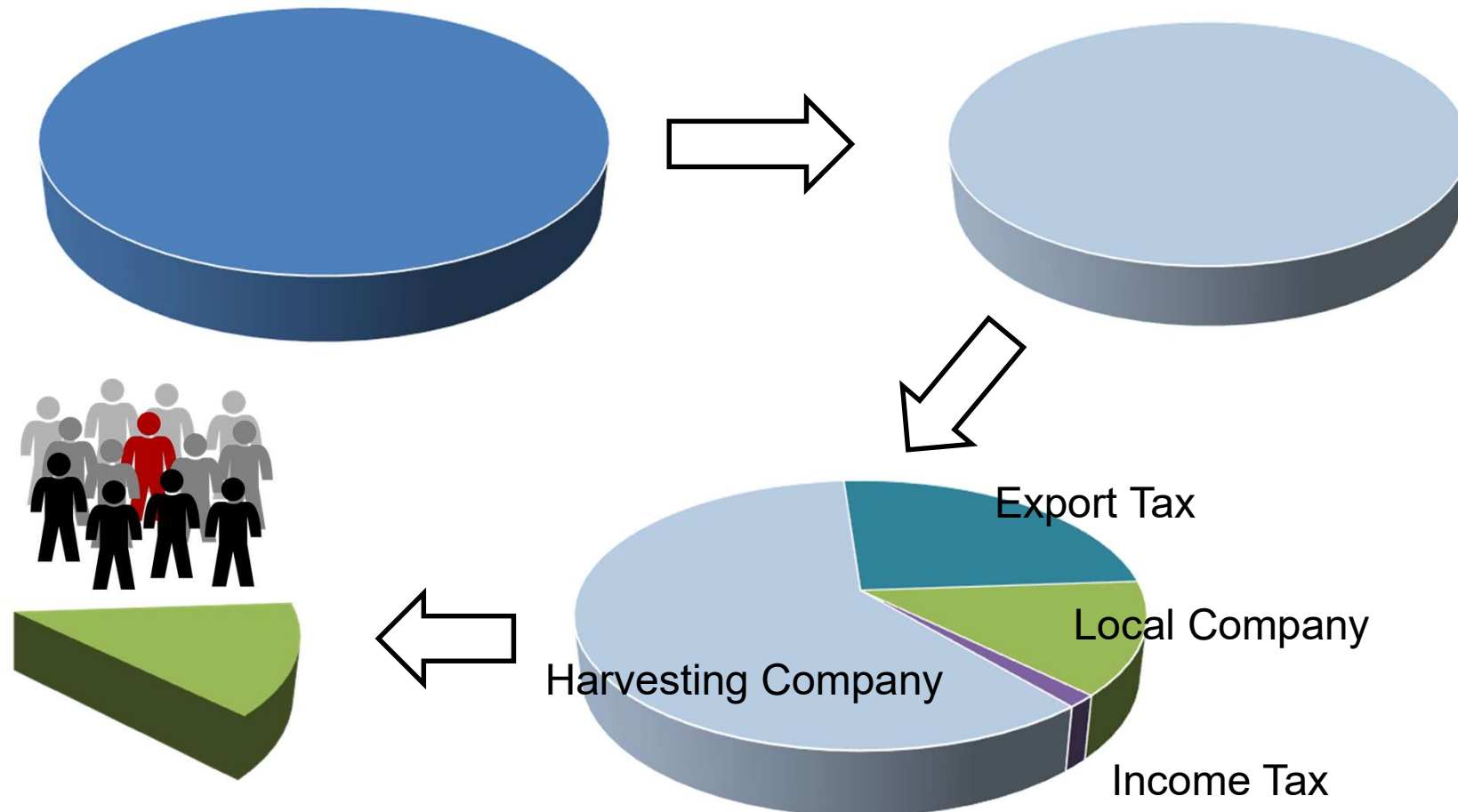


**Project on Capacity Development for Sustainable Forest
Resources Management in Solomon Islands
Ministry of Forest and Research (MOFR) &
Japan International Cooperation Agency (JICA)**



In that case the revenue

10% of the total revenue is missioned by the central bank (reforestation program)



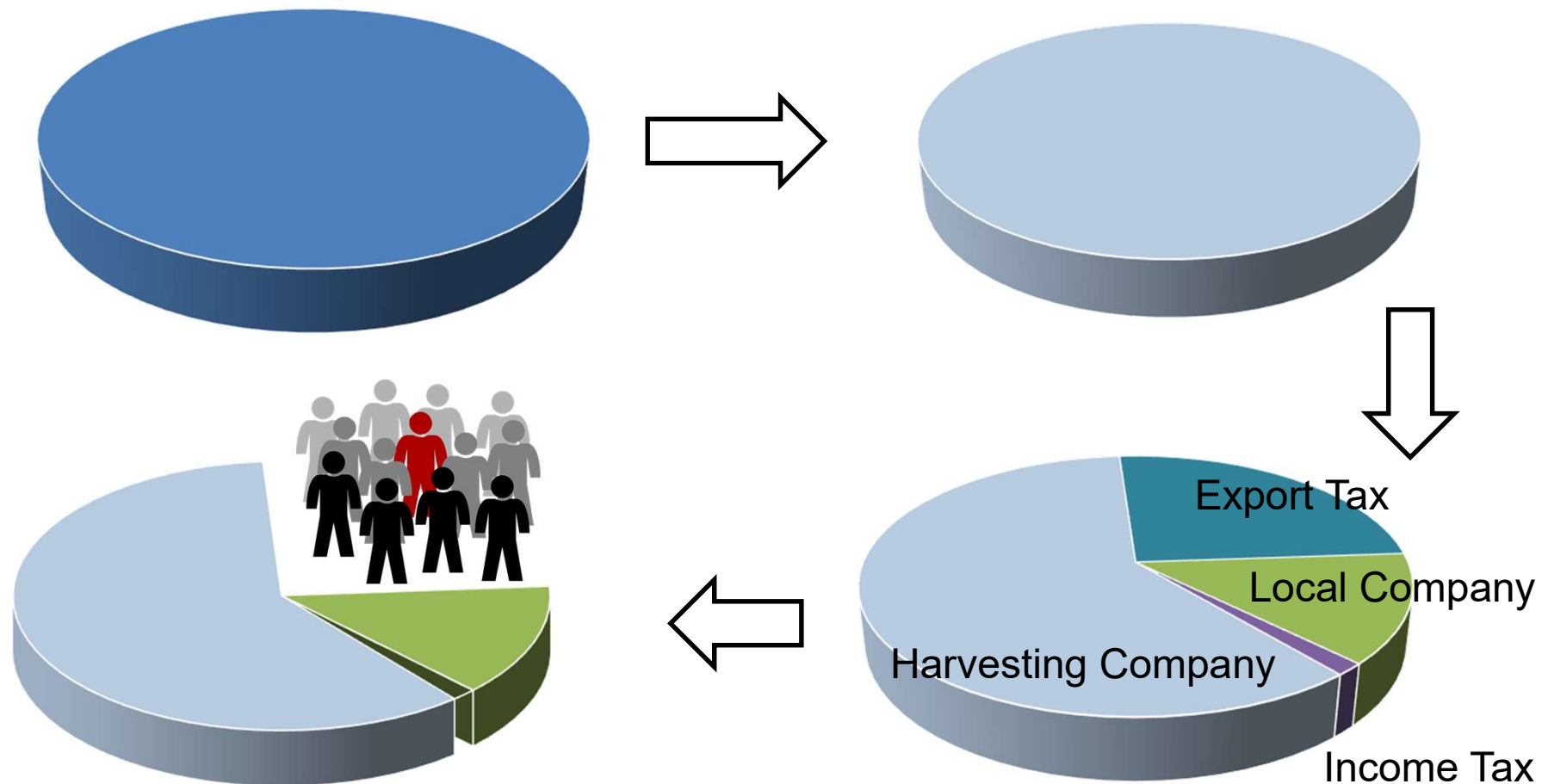


**Project on Capacity Development for Sustainable Forest
Resources Management in Solomon Islands
Ministry of Forest and Research (MOFR) &
Japan International Cooperation Agency (JICA)**



If your community export logs and timbers...

10% of the total revenue is missioned by the central bank (reforestation program)



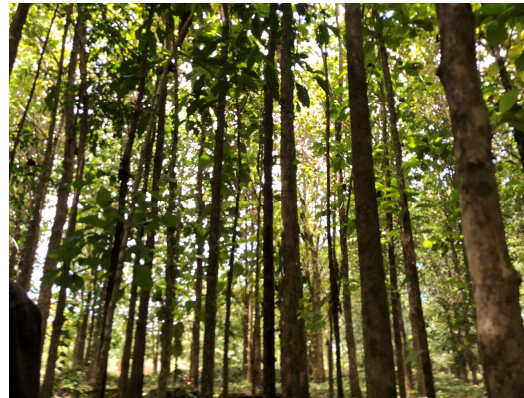


**Project on Capacity Development for Sustainable Forest
Resources Management in Solomon Islands
Ministry of Forest and Research (MOFR) &
Japan International Cooperation Agency (JICA)**



Ministry of Forest and Research support

Provide the sale price information of logs and timbers



Assist the down streaming process and wood utilization





**Project on Capacity Development for Sustainable Forest
Resources Management in Solomon Islands
Ministry of Forest and Research (MOFR) &
Japan International Cooperation Agency (JICA)**



Thank you